

# Netherby 1DW1 LWD RT 500TVD

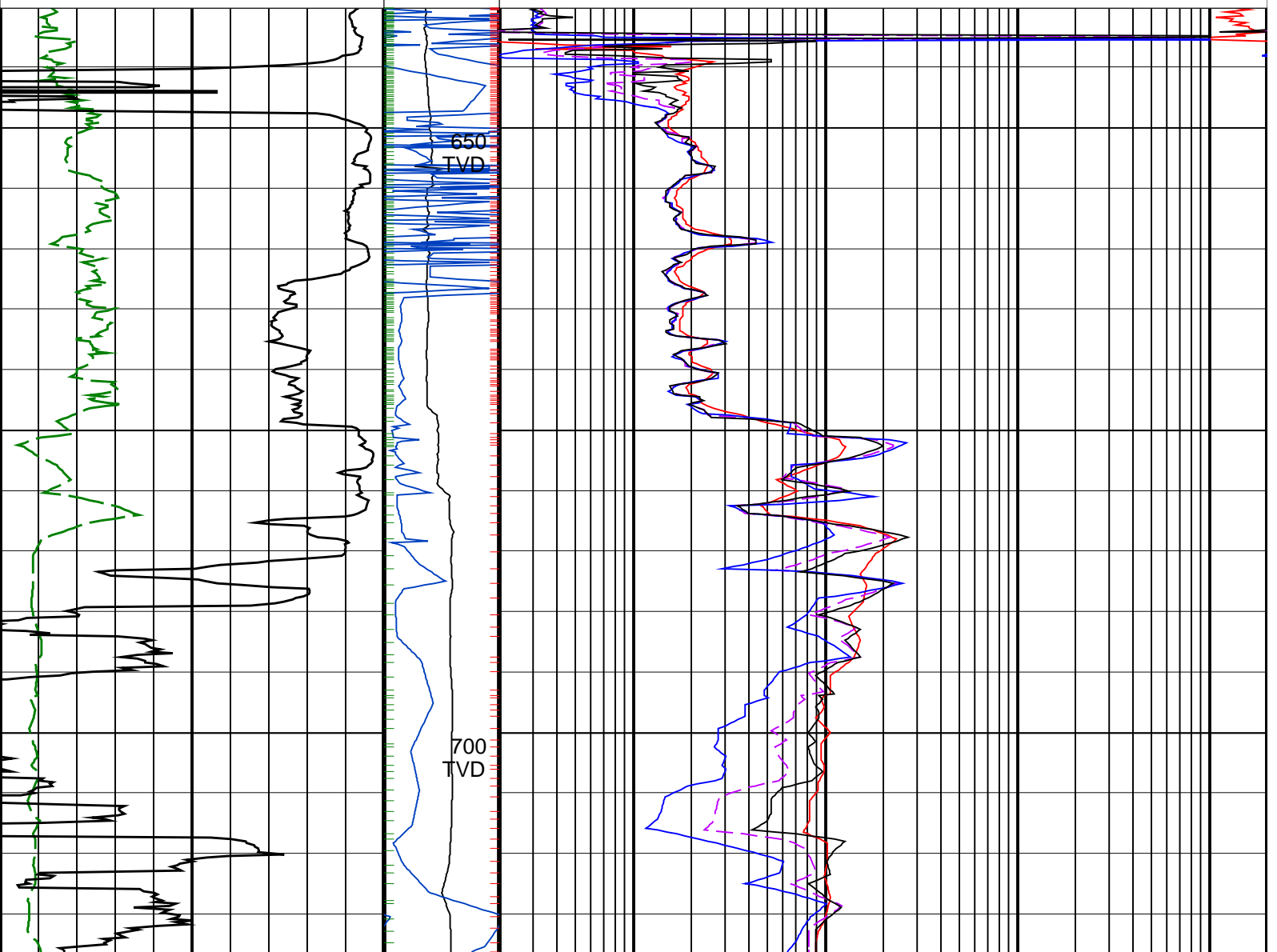
IDEAL Version: ID13\_OC\_08 <TVD> Vertical Scale: 1:500

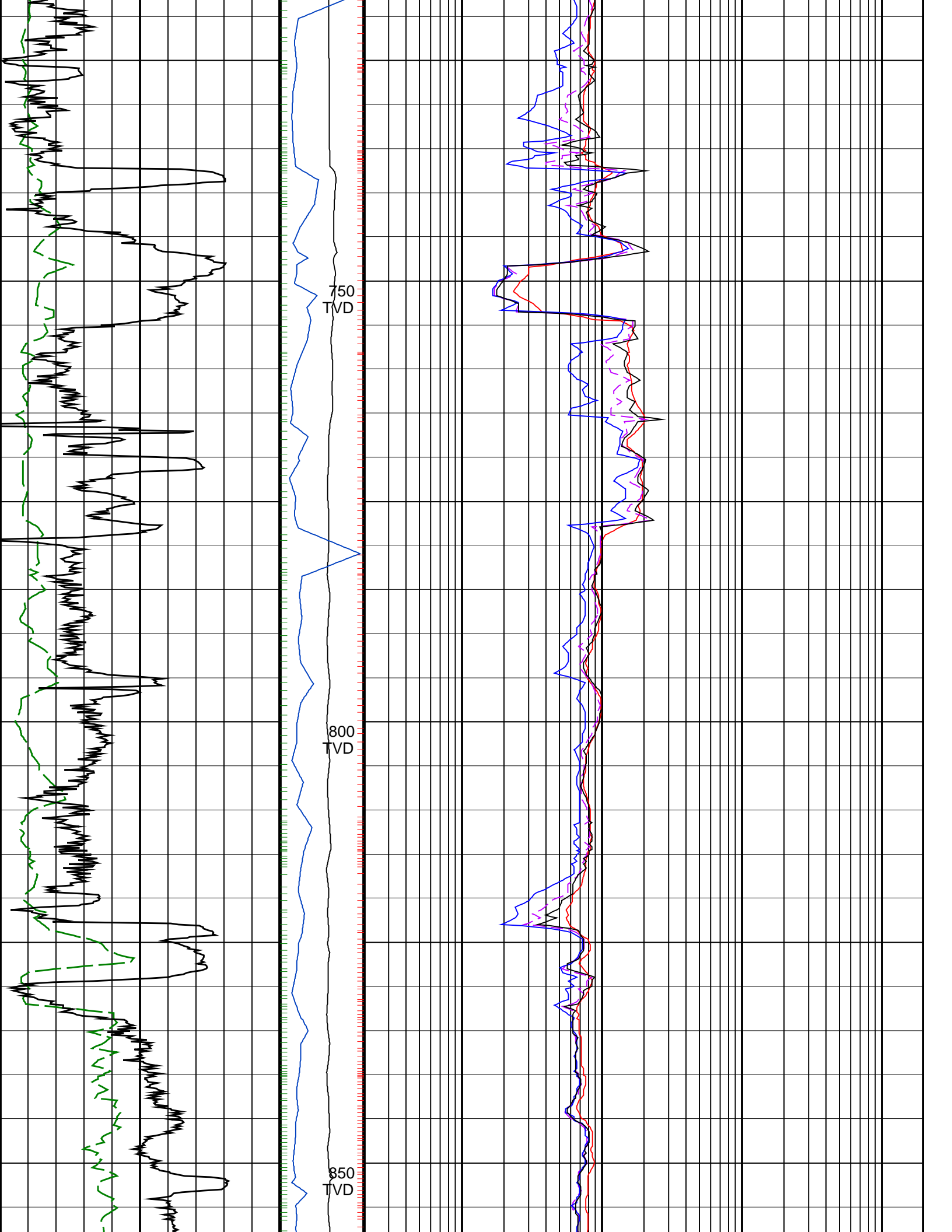
Graphics File Created: 04-Aug-2008 02:52

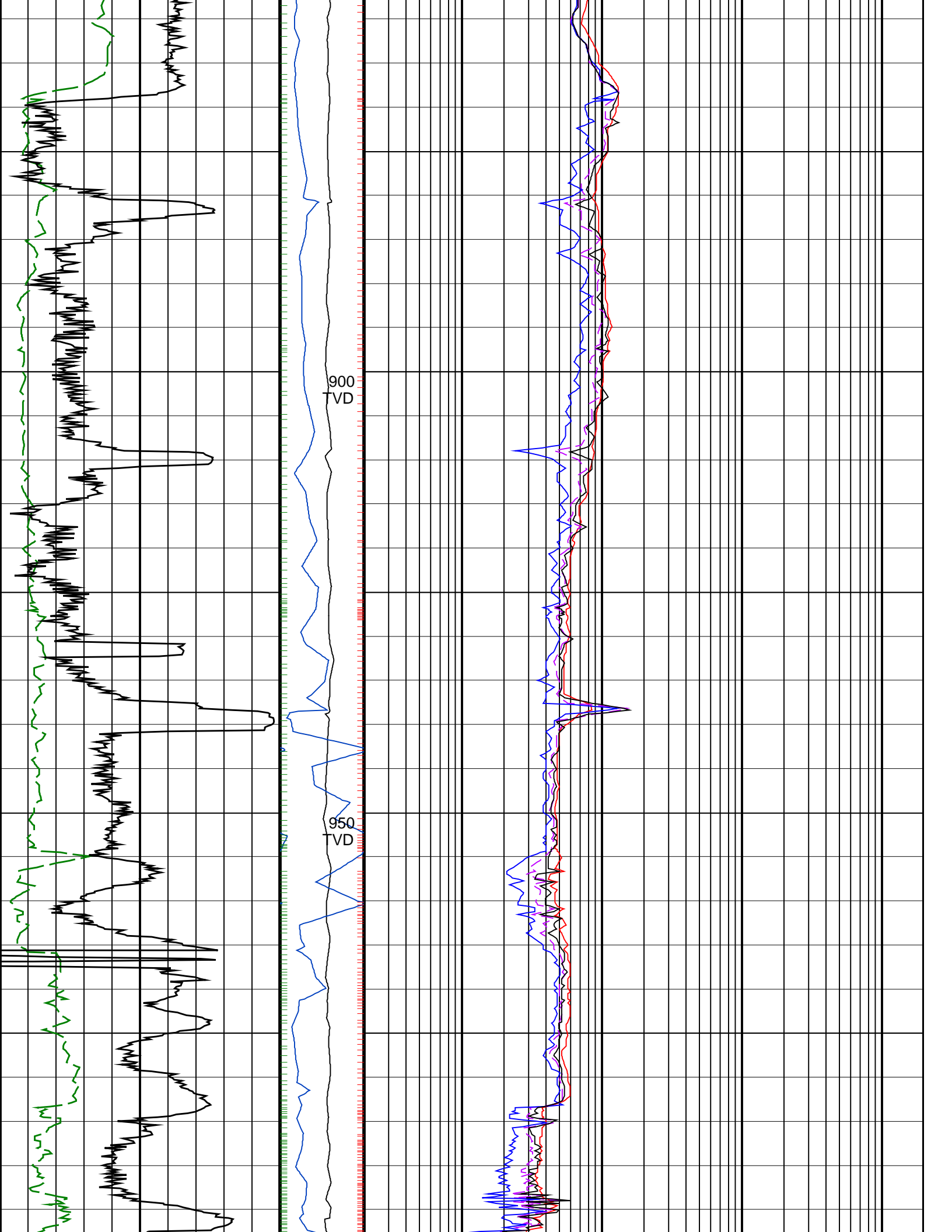
## PIP SUMMARY

- ┆ ARC Gamma Ray Samples
- ┆ ARC Resistivity Samples

		ARC BHCorr Phase-Shift Resistivity 40-in. at 2 MHz, Real-Time (P40H_RT)
		0.2 (OHMM) 2000
		ARC BHCorr Phase-Shift Resistivity 16-in. at 2 MHz, Real-Time (P16H_RT)
		0.2 (OHMM) 2000
ARC Gamma Ray, Real-Time (ARC_GR_RT) (GAPI)	MWD Collar RPM (CRPM_RT) (RPM)	ARC BHCorr Phase-Shift Resistivity 28-in. at 2 MHz, Real-Time (P28H_RT) (OHMM)
0 200	0 200	0.2 (OHMM) 2000
ROP*5 (ROP5) (M/HR)	PKPK_RPM (Stick_RT) (RPM)	ARC BHCorr Attenuation Resistivity 40-in. at 2 MHz, Real-Time (A40H_RT) (OHMM)
200 0	0 200	0.2 (OHMM) 2000

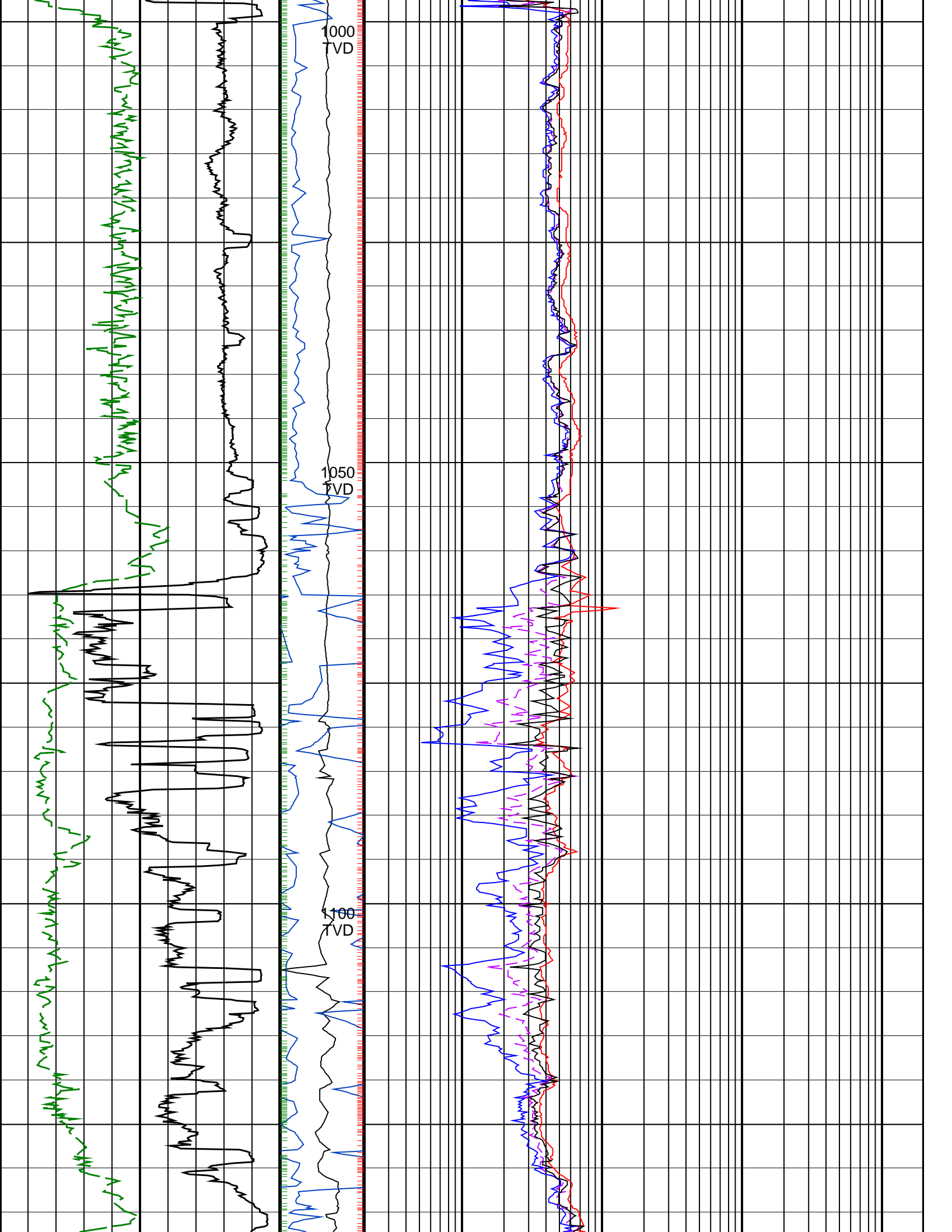


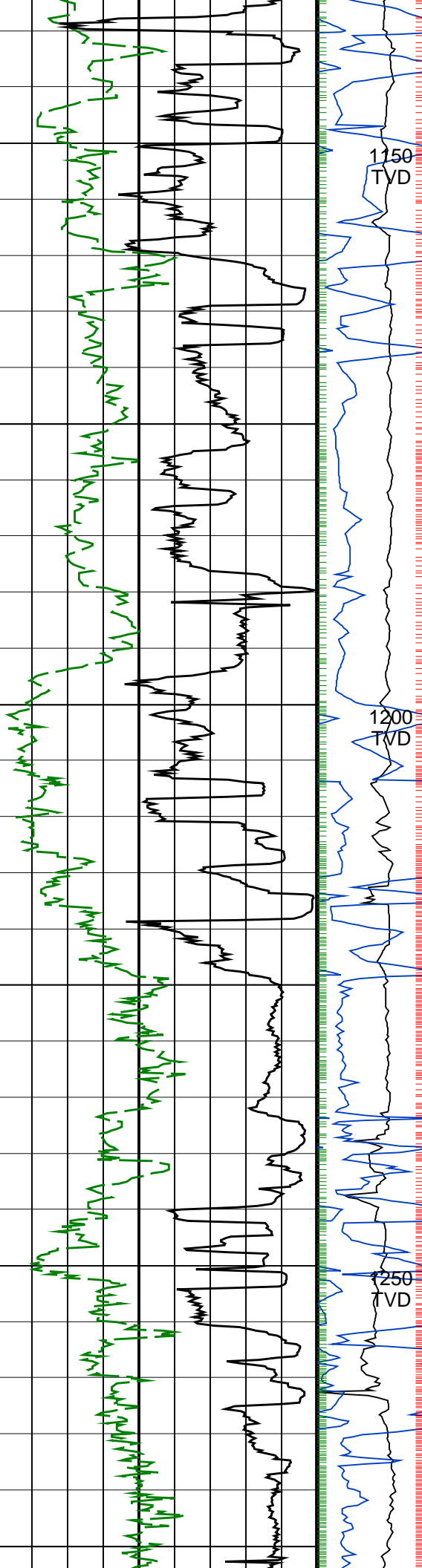




900  
TVD

950  
TVD

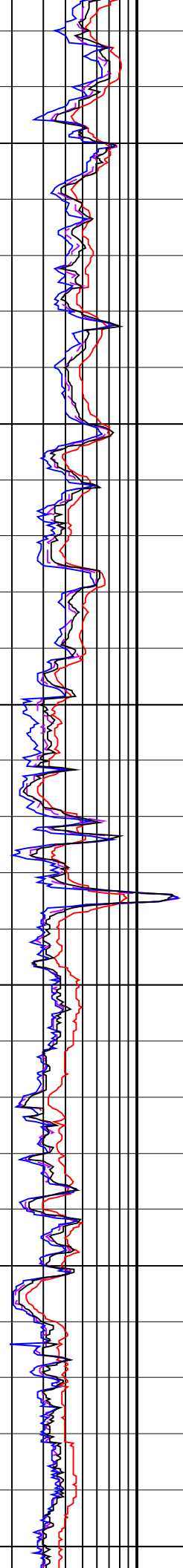


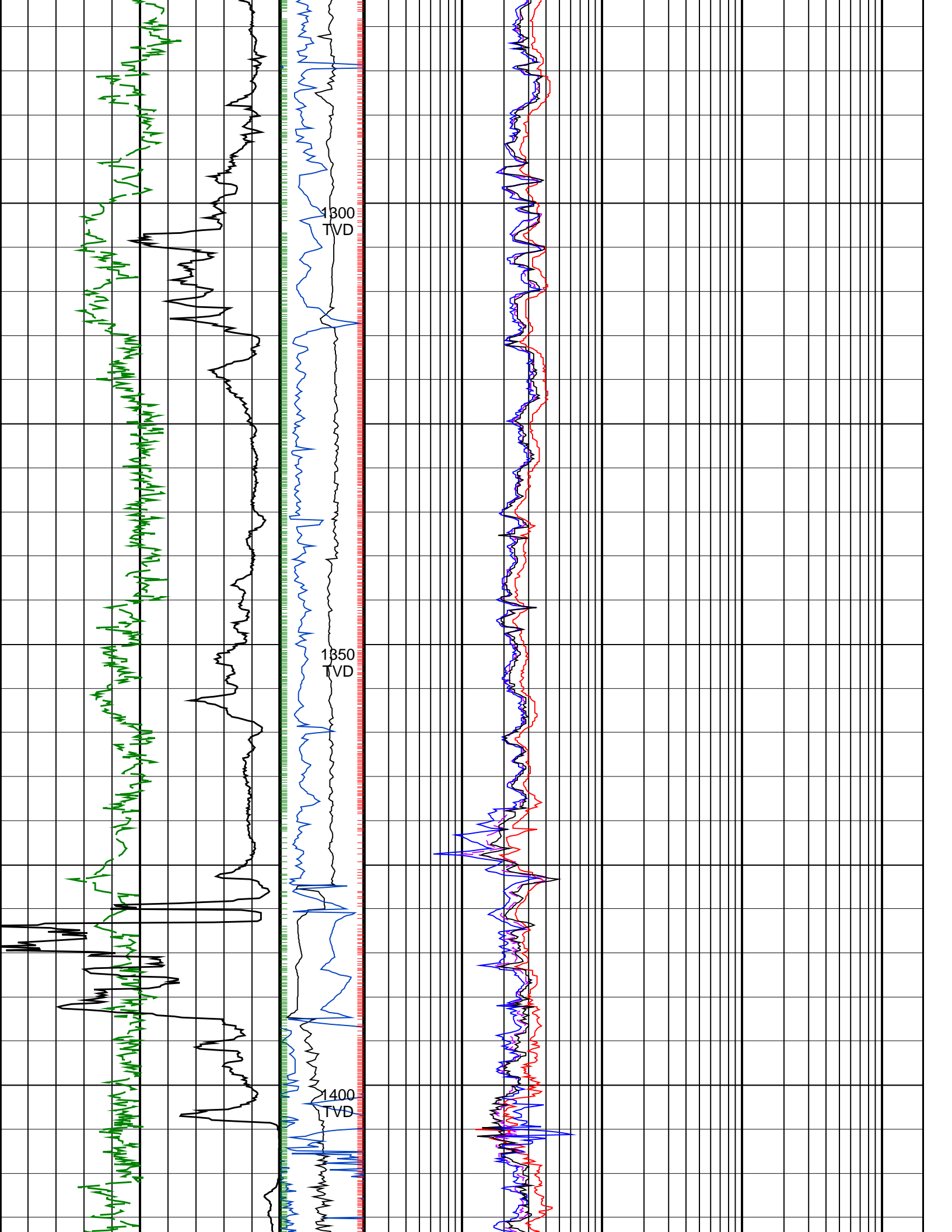


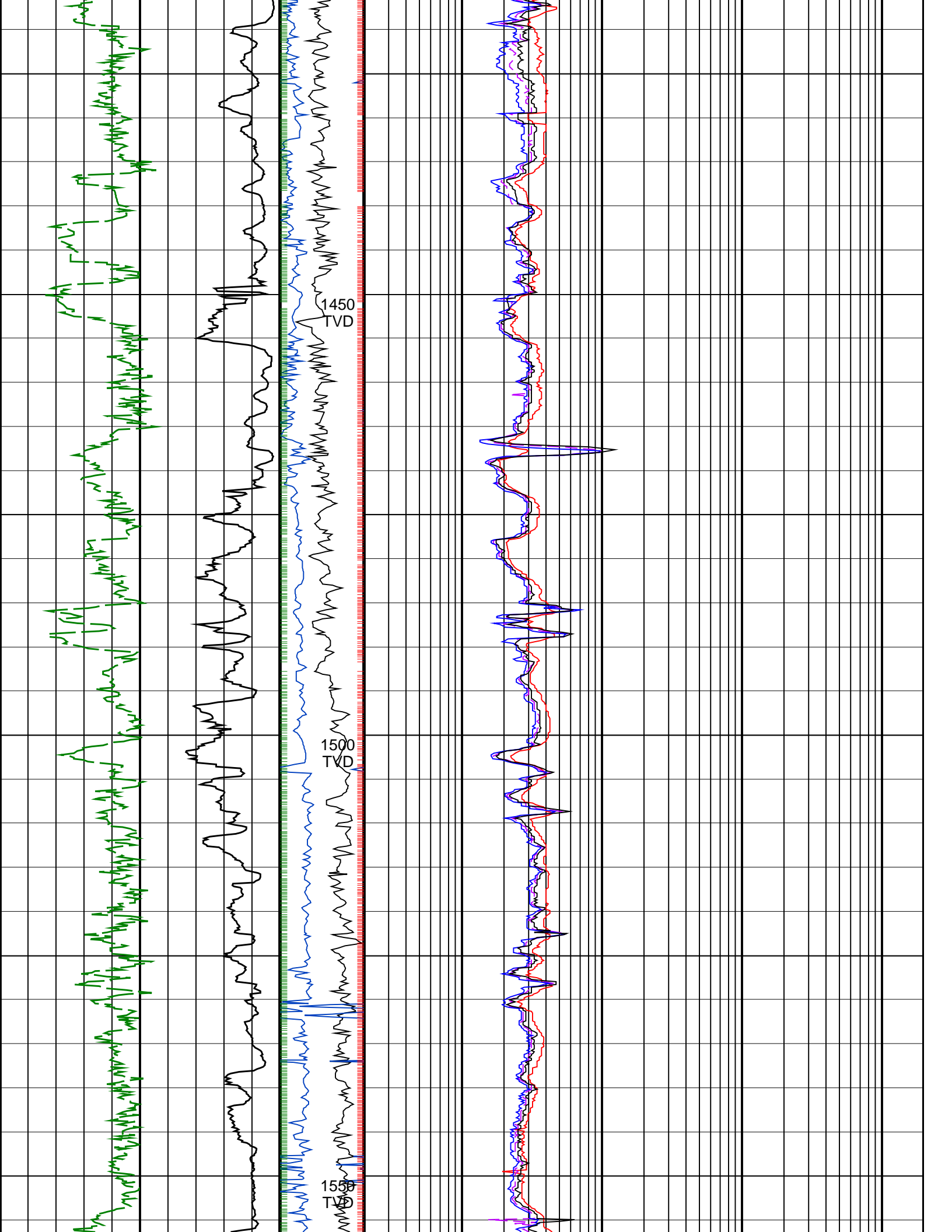
1150  
TVD

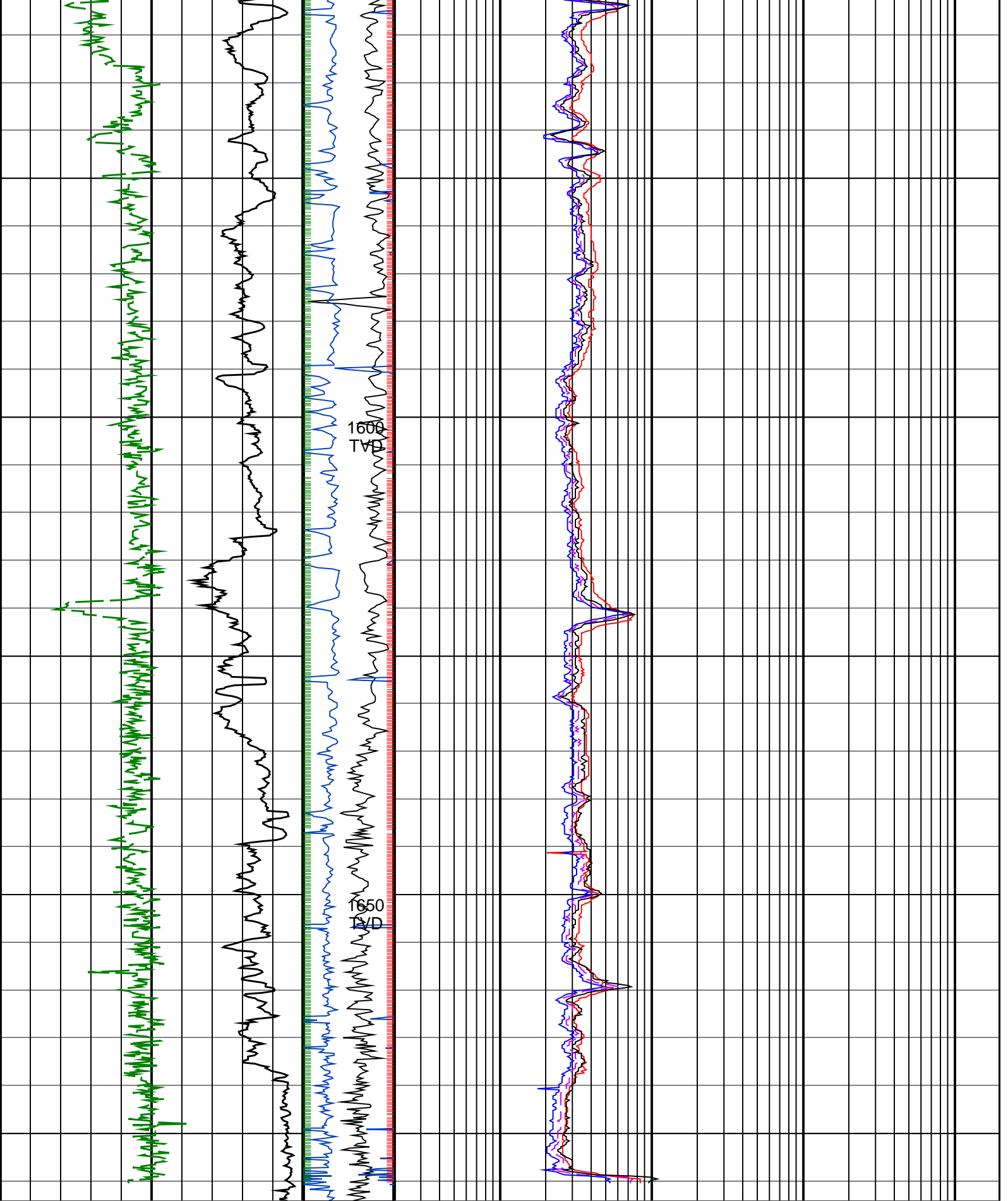
1200  
TVD

1250  
TVD









<p>ROP*5 (ROP5) (M/HR)</p>	<p>PKPK RPM (Stick_RT) (RPM)</p>	<p>ARC BHCORR Attenuation Resistivity 40-in. at 2 MHz, Real-Time (A40H_RT) (OHMM)</p>
<p>200</p>	<p>0</p>	<p>0.2</p>
	<p>0 200</p>	<p>2000</p>

<p>ARC Gamma Ray, Real-Time (ARC_GR_RT)</p>	<p>MWD Collar RPM (CRPM_RT)</p>	<p>ARC BHCORR Phase-Shift Resistivity 28-in. at 2 MHz, Real-Time (P28H_RT)</p>
---	-------------------------------------	--



0	(GAPI)	200	(CRPM_RT) (RPM)	0.2	(OHMM)	2000
				0.2	ARC BHCorr Phase-Shift Resistivity 16-in. at 2 MHz, Real-Time (P16H_RT) (OHMM)	2000
				0.2	ARC BHCorr Phase-Shift Resistivity 40-in. at 2 MHz, Real-Time (P40H_RT) (OHMM)	2000
PIP SUMMARY						
<ul style="list-style-type: none"> <li>┆ ARC Gamma Ray Samples</li> <li>┆ ARC Resistivity Samples</li> </ul>						